



### Description

SBS is a stainless steel tensile type load cell. It is suitable for tensile type scale and tensile type material testing machine. It is made of stainless steel material and has IP66 waterproof and dustproof structure. It is suitable for moisture environment.

### Features

- ▶ Tension type
- ▶ Stainless steel material
- ▶ Hermetically sealed structure
- ▶ Designed according to IP66

### Option

- ▶ Intrinsic safety explosion (Ex ia IIC T4)
- ▶ Explosion proof (Ex d IIC T4)
- ▶ Dust explosion (Ex tD A21 T135 °C IP66)
- ▶ Rod End Bearing Type Accessory  
(500 kgf: M12 x 1.75)  
(1 to 2 tf: M18 x 1.5)  
(5K: M24 x 2.0)

### Application

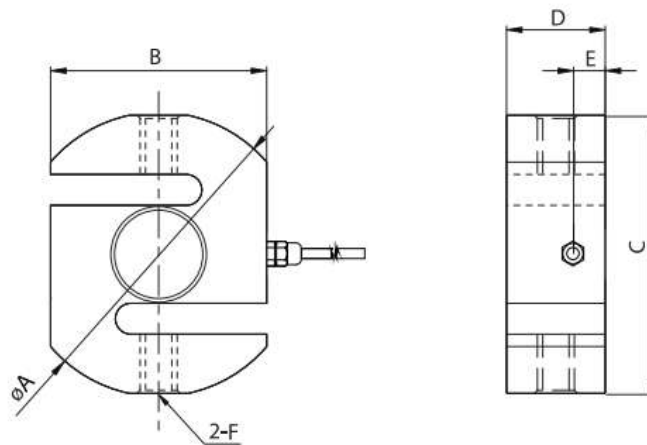
- ▶ Crane Scale
- ▶ Material Testing Machine
- ▶ Tensile Testing Machine

### Specifications

Capacity(R.L)	kgf	500, 1K, 2K, 5K	
Rated Output	mV / V	2.0 ± 0.002	
Zero Balance	mV / V	0.0 ± 0.02	
Accuracy Class	-	-	
Non-Linearity	% R.O.	≤0.05	
Hysteresis	% R.O.	≤0.05	
Combined Error	% R.O.	≤0.05	
Repeatability	% R.O.	≤0.01	
Creep for 30min.	% R.O.	≤0.03	
Return for 30min.	% R.O.	≤0.03	
Resolution	-	≤1/3000	
Division	mV / V	0.001	
Temperature Effect on	-Zero Value	%/10°C	≤0.03
	-Output Value	%/10°C	≤0.03
Excitation	-Recommended	V	10
	-Maximum	V	15
Resistance	-Input	Ω	400 ± 25
	-Output	Ω	350 ± 3.5
	-Insulation	MΩ	> 2000
Compensated Temperature Range	°C	-10 to +40	
Operating Temperature Range	°C	-30 to +80	
Material & Plate	-	Stainless steel	
Cable Specification	-	Ø5.4 x 4P x 5m (Urethane)	
Safety Overload	% R.L.	150	

### Dimensions

- ▶ SBS



Capa.	A	B	C	D	E	F	Cable (m)
500kgf	92	70	90	32	10.3	M12 X 1.75	5
1-2tf	92	70	90	32	10.3	M18 X 1.5	
5tf	130	100	120	45	15	M24 X 2	