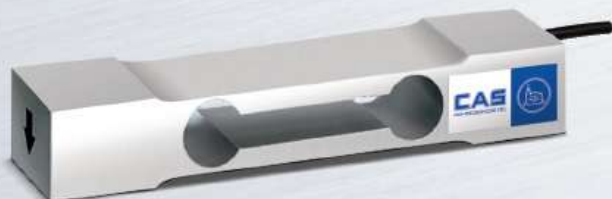


BCLSingle Point
Load Cell (6~50kgf)

Description

BCL is a low profile single point type load cell of aluminum material. It is suitable for small sized commercial scale, bench scale, and counting scale.

Specifications

Capacity(R.L.)		kgf	6, 10, 15, 20, 30, 35, 50	
Rated Output	mV / V		2.0 ± 0.2	
Zero Balance	mV / V		0.0 ± 0.05	
Accuracy Class	-		C3	-
Non-Linearity	% R.O.		≤0.025	≤0.03
Hysteresis	% R.O.		≤0.025	≤0.03
Combined Error	% R.O.		≤0.025	≤0.03
Repeatability	% R.O.		≤0.01	≤0.01
Creep for 30min.	% R.O.		≤0.017	≤0.03
Return for 30min.	% R.O.		≤0.017	≤0.03
Resolution	-		≤1/4000	≤1/3000
Division	mV / V		0.0005	0.00067
Temperature Effect on	-Zero Value	%/10°C	≤0.014	≤0.028
	-Output Value	%/10°C	≤0.011	≤0.014
Excitation	-Recommended	V	10	
	-Maximum	V	15	
Resistance	-Input	Ω	420 ± 20	
	-Output	Ω	350 ± 3.5	
	-Insulation	MΩ	> 2000	
Compensated Temperature Range	°C		-10 to +40	
Operating Temperature Range	°C		-30 to +80	
Material & Plate	-		Aluminum	
Cable Specification	-		Ø4 x 4P x 60cm (PVC)	
Safety Overload	% R.L.		150	
Platform Size	mm		300 x 300	

Features

- ▶ Pressure type
- ▶ Designed according to IP65

Option

- ▶ OIML C3 Approved (OIML 60)

Application

- ▶ Commercial Scale
- ▶ Bench Scale
- ▶ Platform Scale

Dimensions

- ▶ BCL (6~50kgf)

