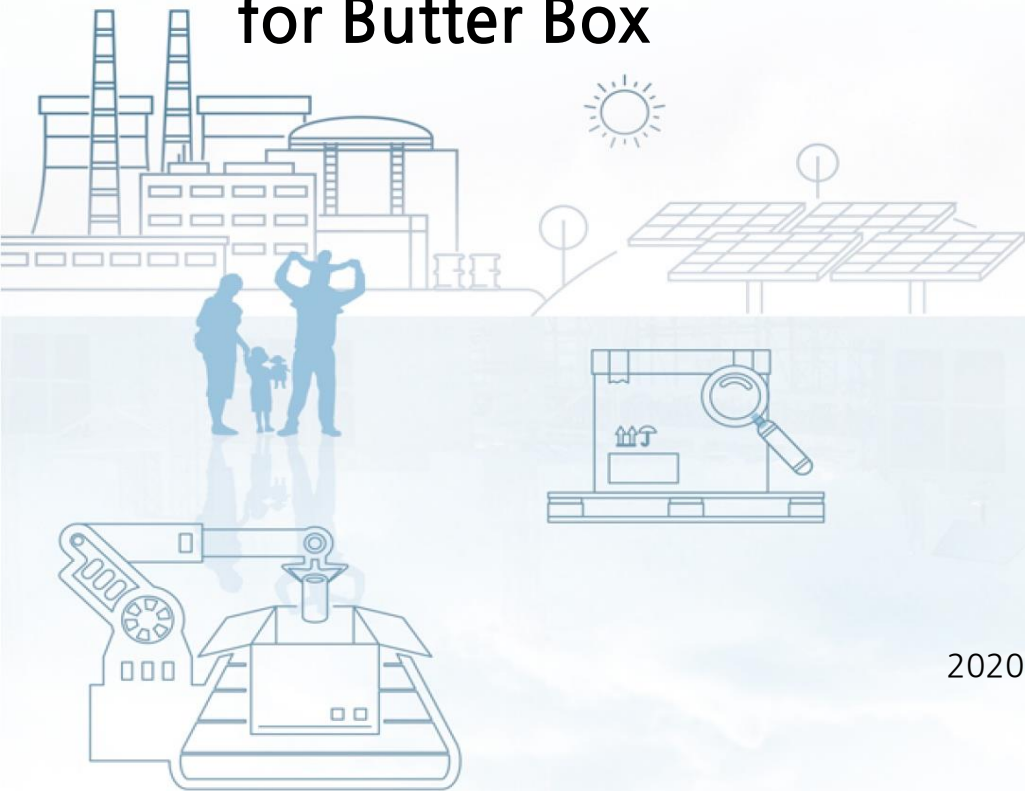


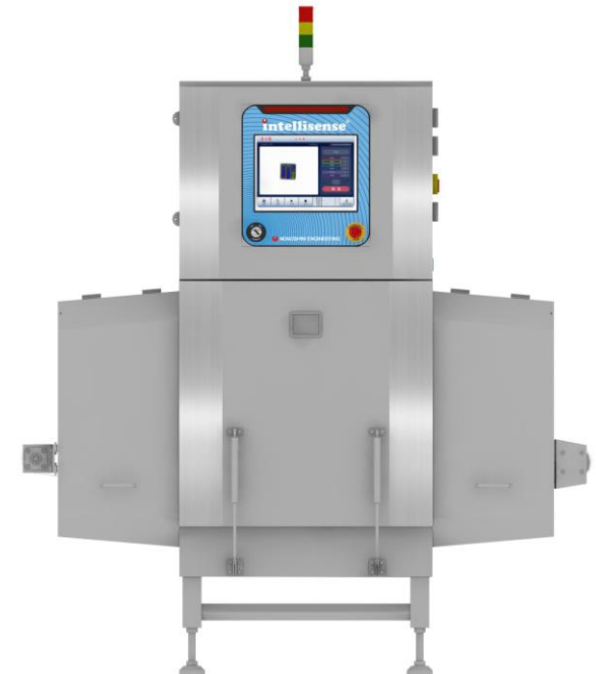
Test Report with XIS-4000 for Butter Box



2020. 03. 10

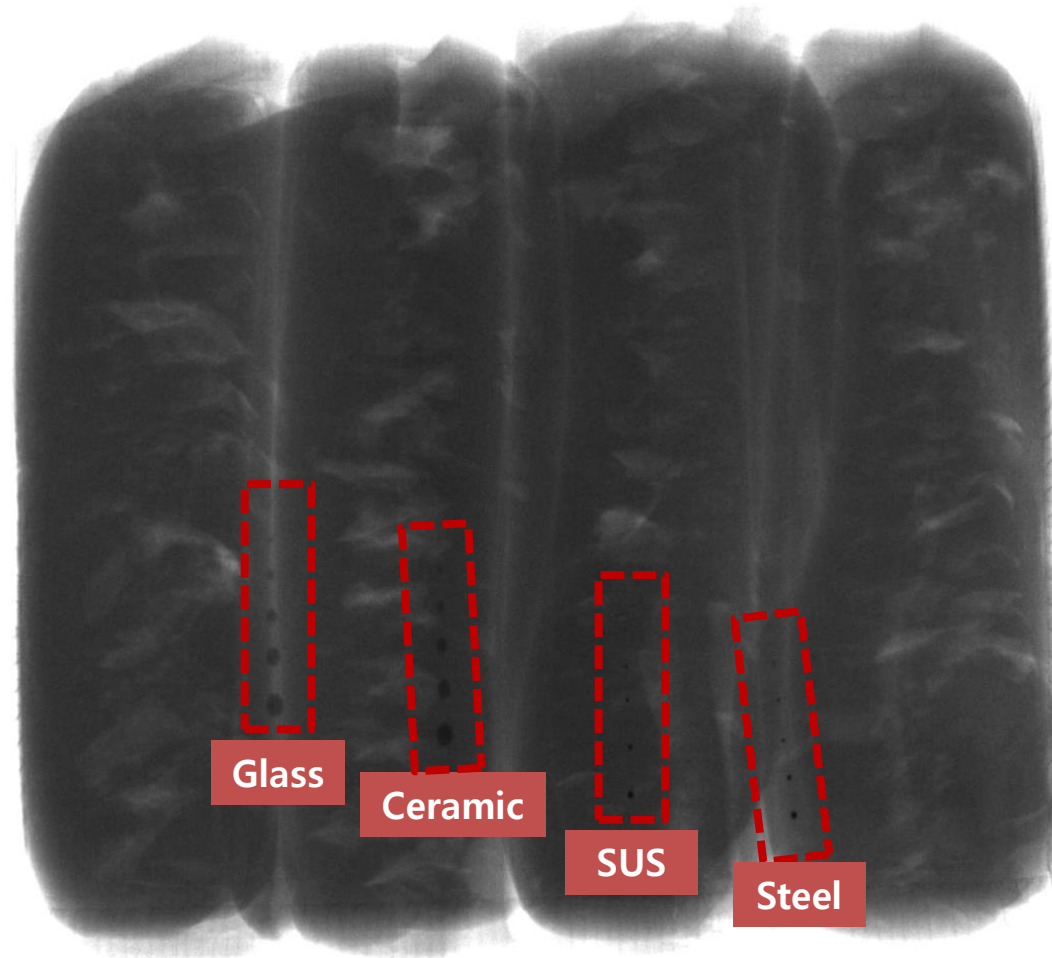
I. Intellisense Model & Inspection Condition

1	Model	Intellisense XIS-4000	
2	Inspection Condition	X-ray Exposure	90KV , 3.0mA(270W)
		Detector	0.4 mm
		Inspection Speed	40 m/min
3	Test Product	Butter Box 20kg	
4	Test Specimen	SUS, Glass, Ceramic	



II. Impurity Sample Inspection Image

Butter Box



III. Test Result

◆ 10 detection criteria for 10 tests

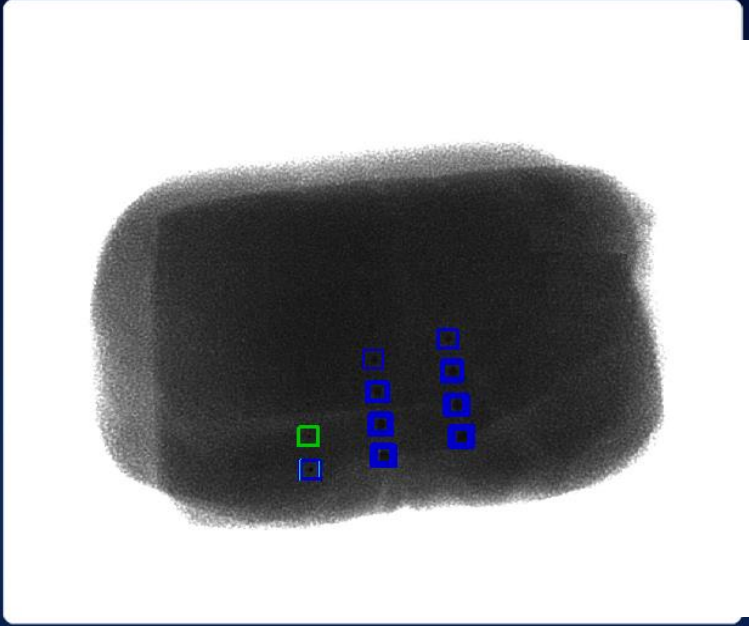
Impurity Specimen	Inspection Performance			비고
	SUS/Fe	Ceramic	Glass	
Butter Box	1.0~1.2 ϕ 99%	4.0 ϕ 80% 5.0 ϕ 99%	4.0 ϕ 80% 5.0 ϕ 99%	

◆ Inspection sensitivity is actually dependent upon physical properties of products or test conditions.

IV. Inspection software image

X-ray On

18/01/06 11:24 0 EA/Minute NONGSHIM ENGINEERING



test

Condition1	0
Condition2	2
Condition3	2
Condition4	0
Condition5	2
Condition6	0

N G

Setup	Image	Start	Stop	Total Count	2	Reset Count
				O K Count	0	
				N G Count	2	
				Omit Count	0	



Smarter Service, *Better Life*